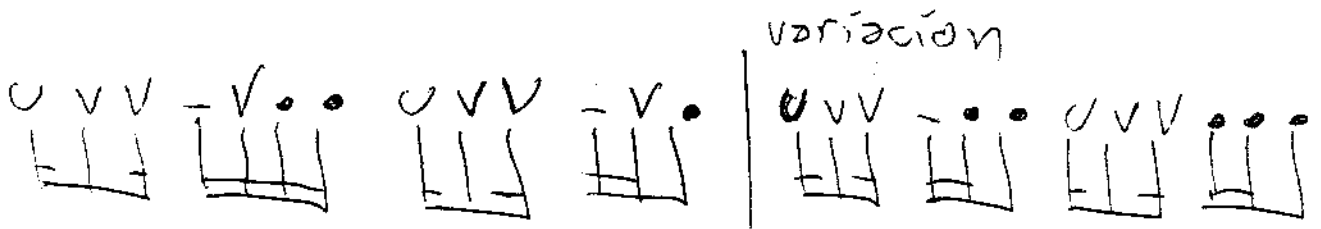


CONGO LAYÉ = la manera de Lokosia

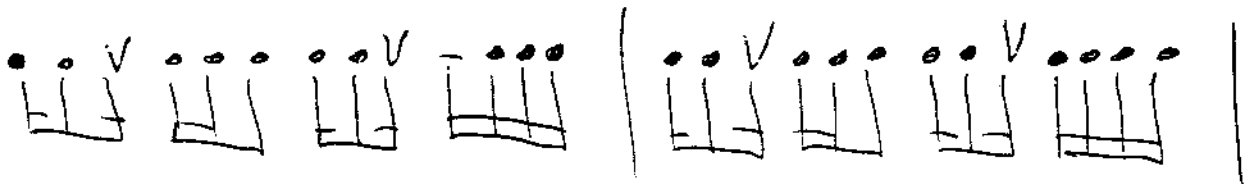
Tañán



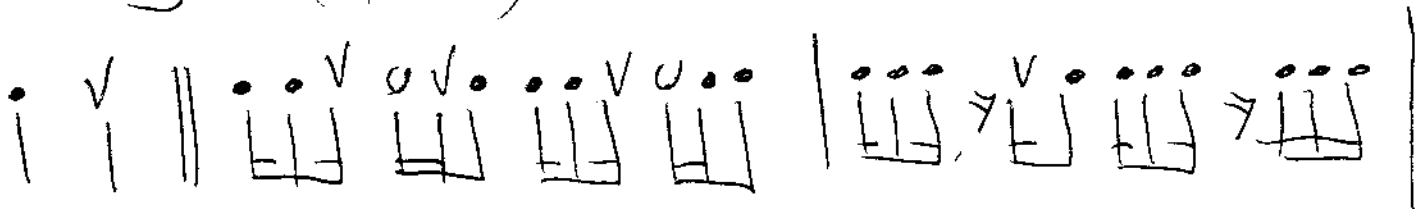
Tambor bas



Tambor medio



Tambor agudo (floreo)



u = bajo

v = tapao

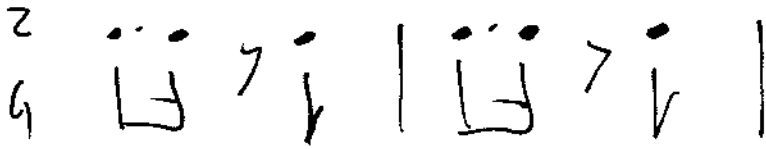
• = abierto

- = dedo o fantasma

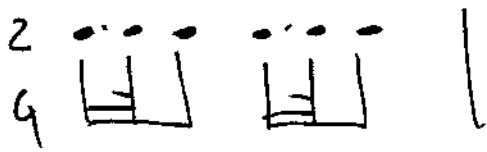
Congo layé

A la manera
de Vicente Portuondo

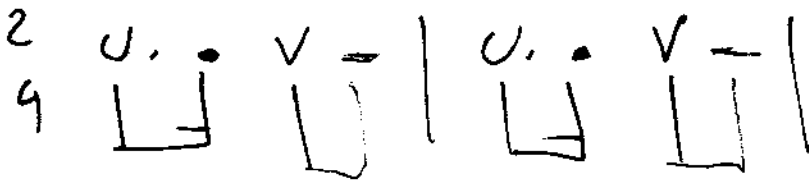
Trián



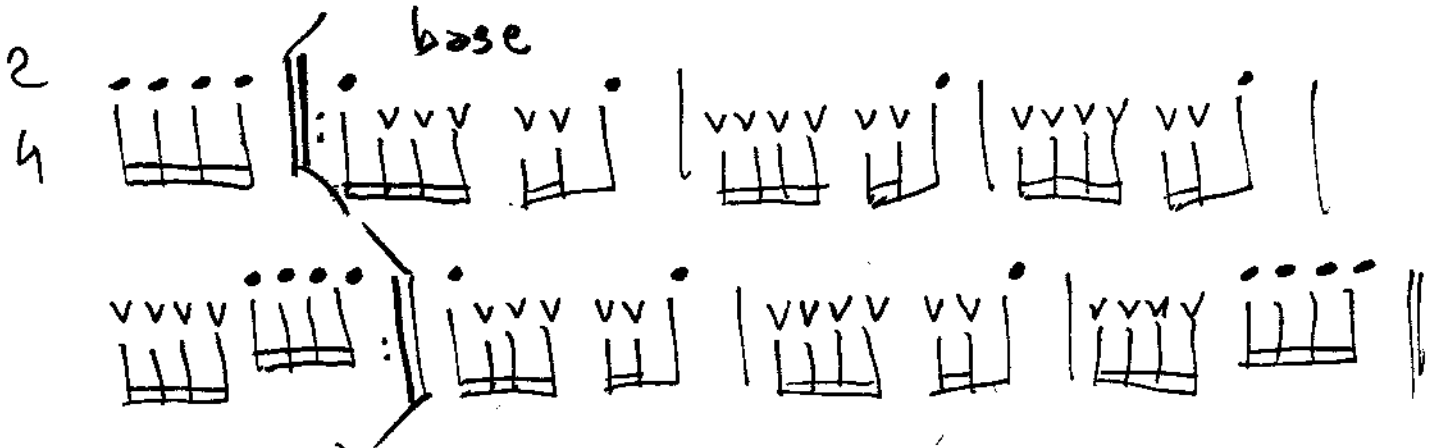
leggedé (palitos)



sugró (mano y paila)



Radó (palitos)



Enso (radó) variación

